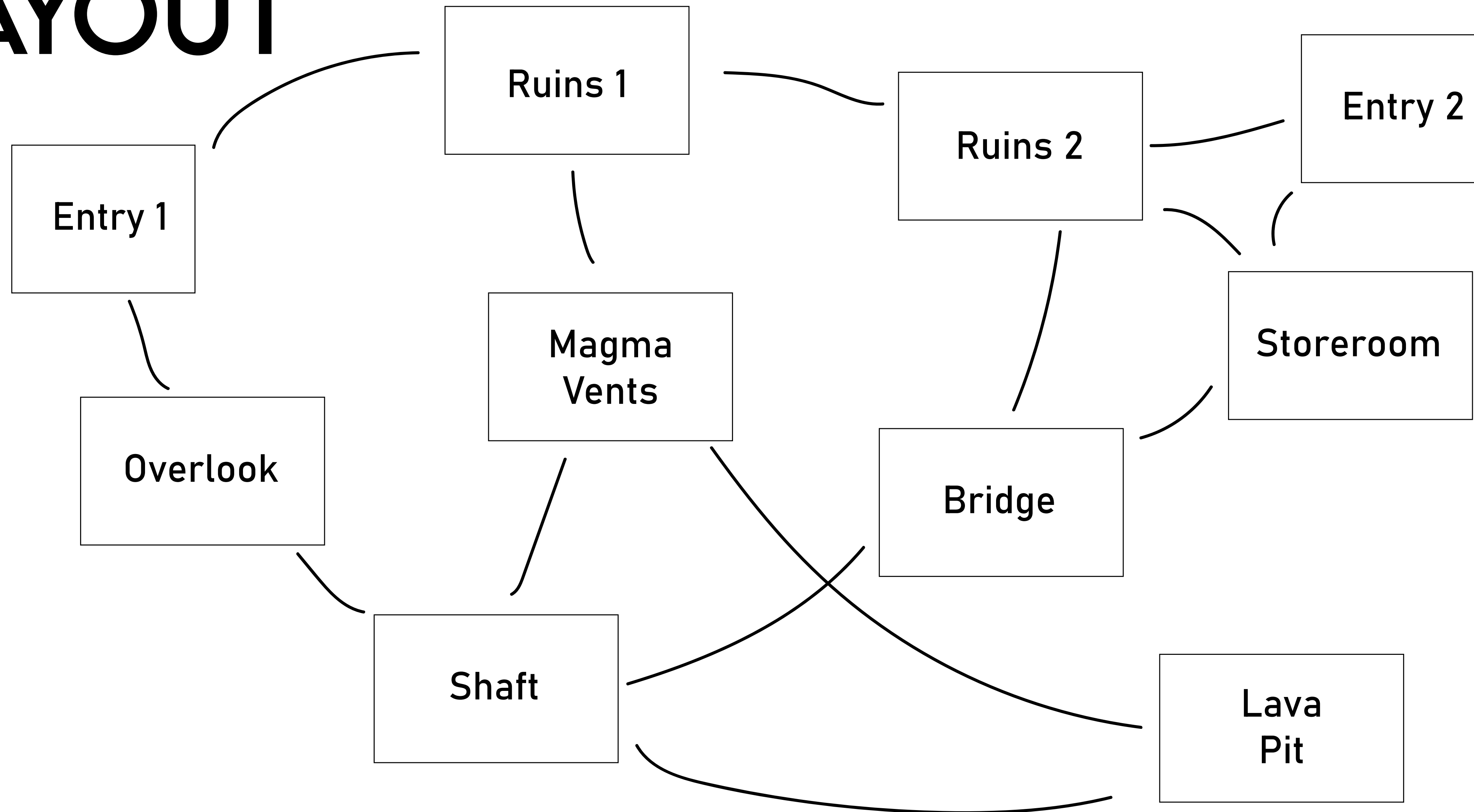
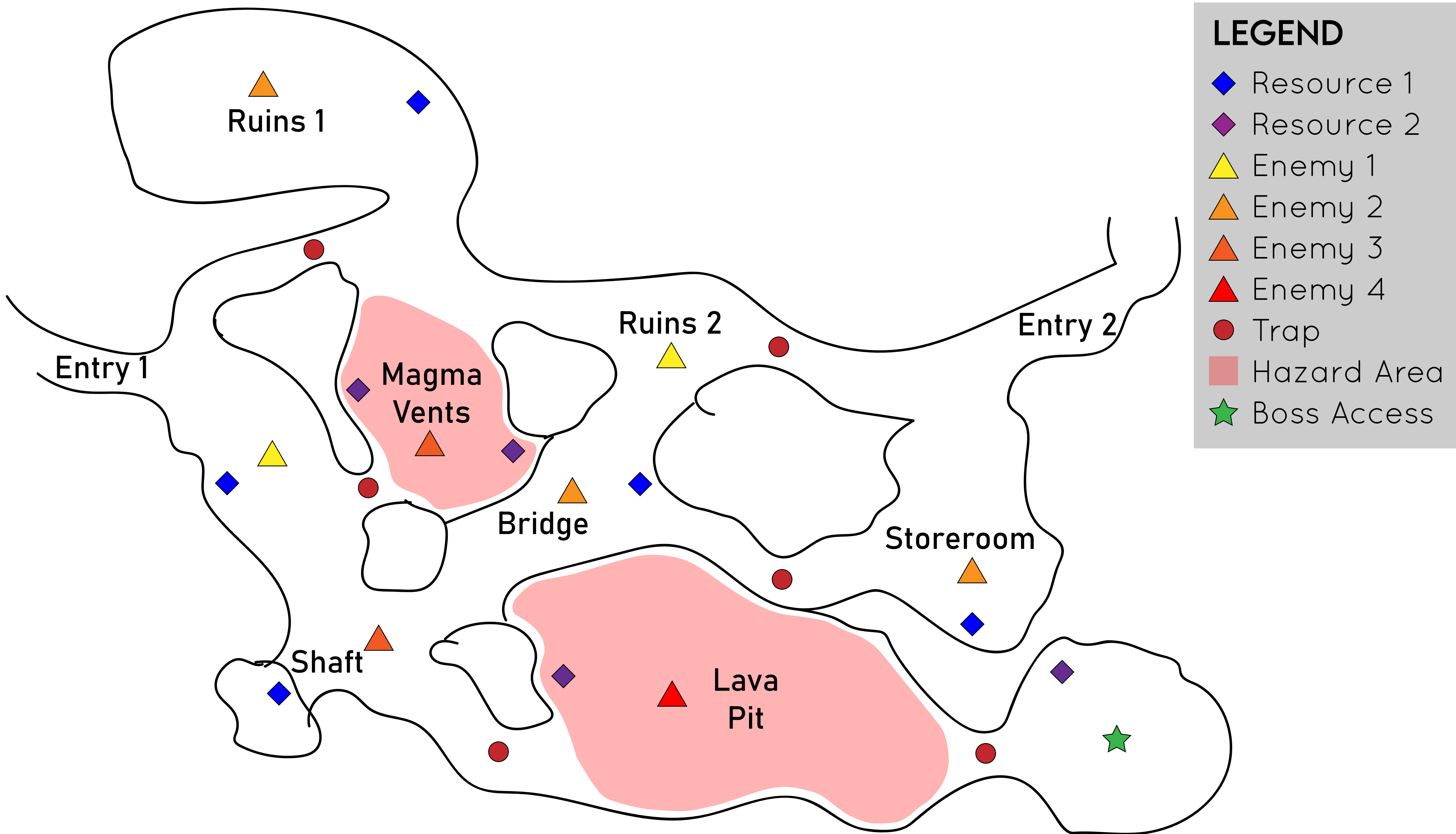
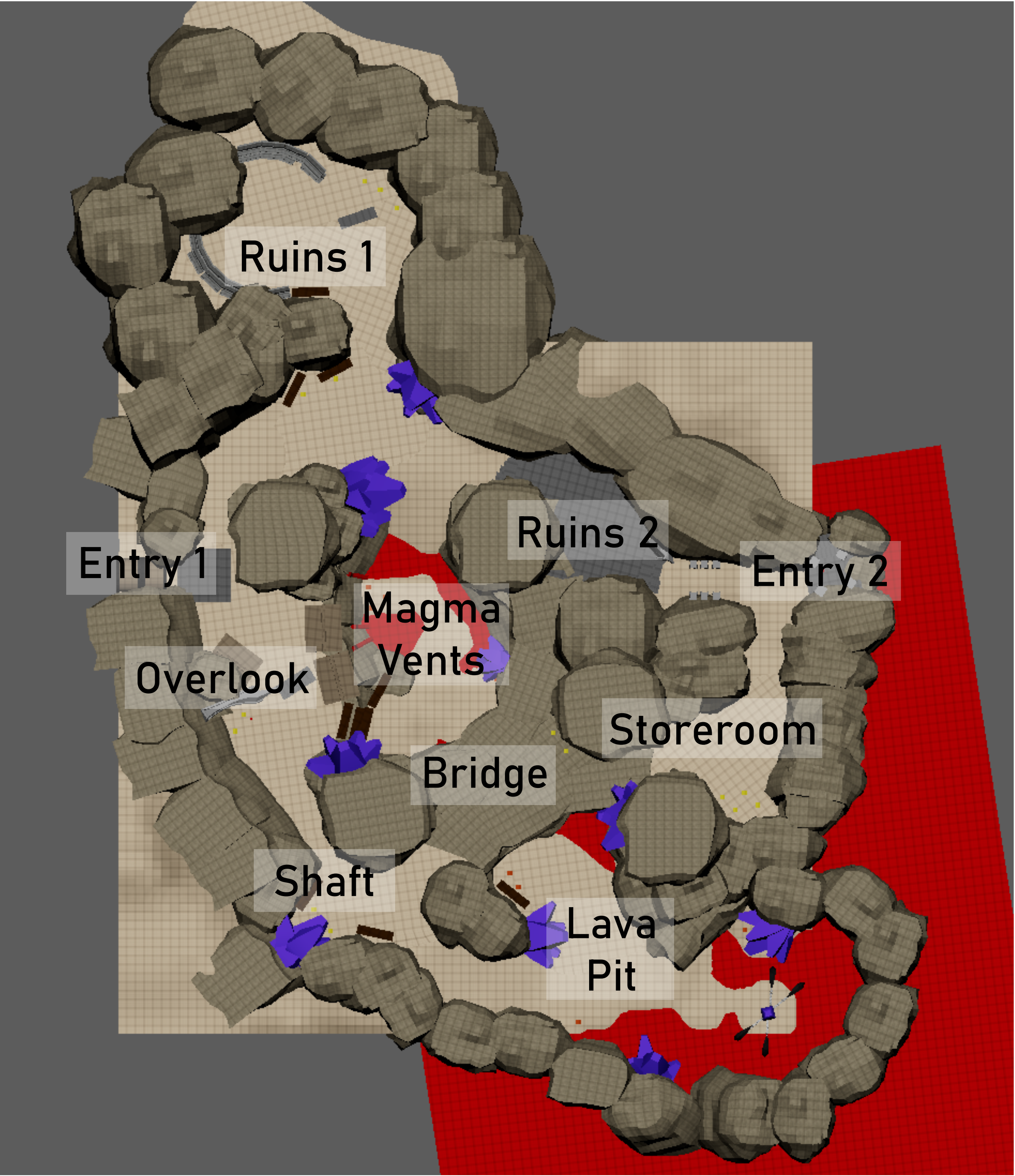


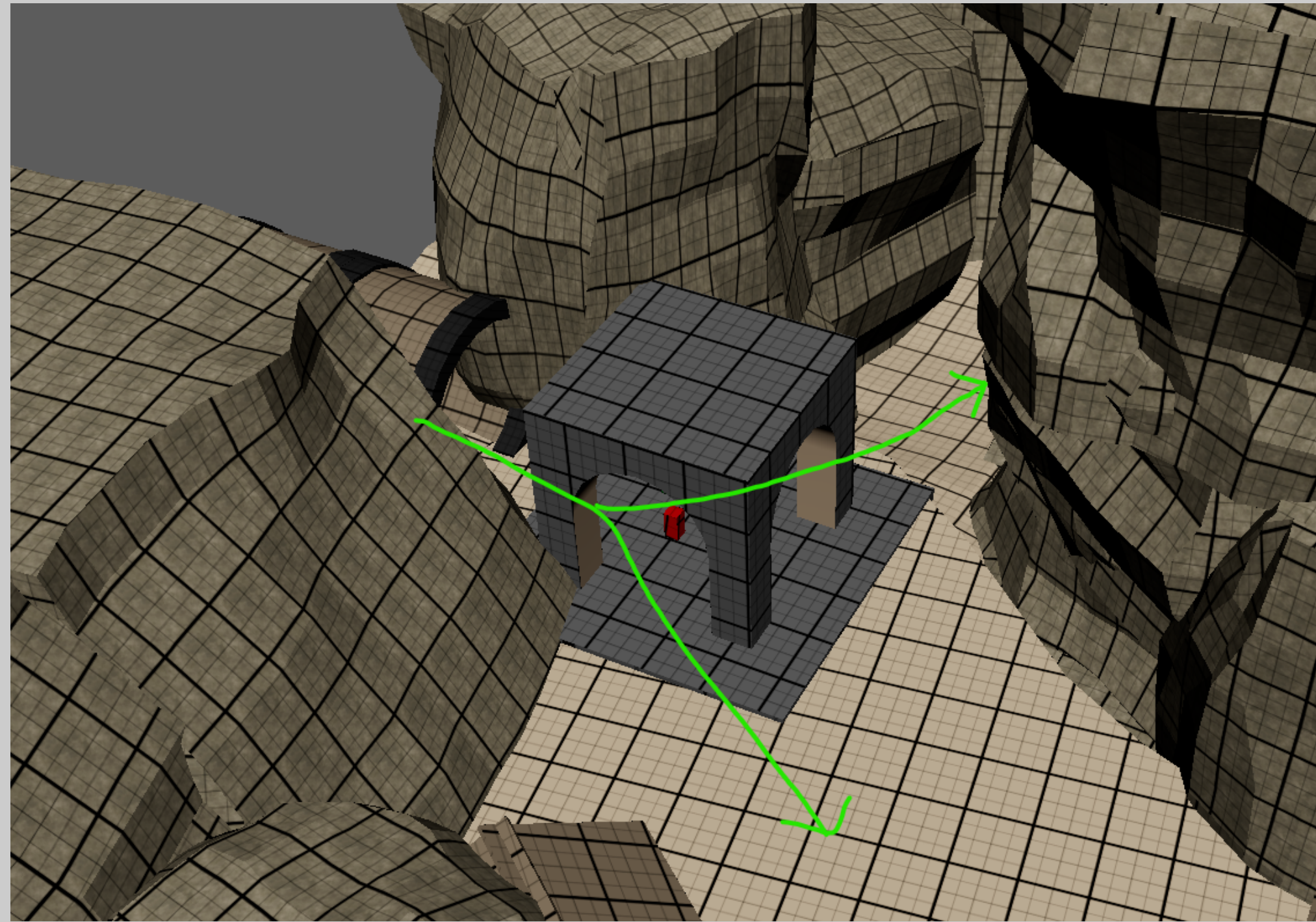
LAYOUT







ENTRIES

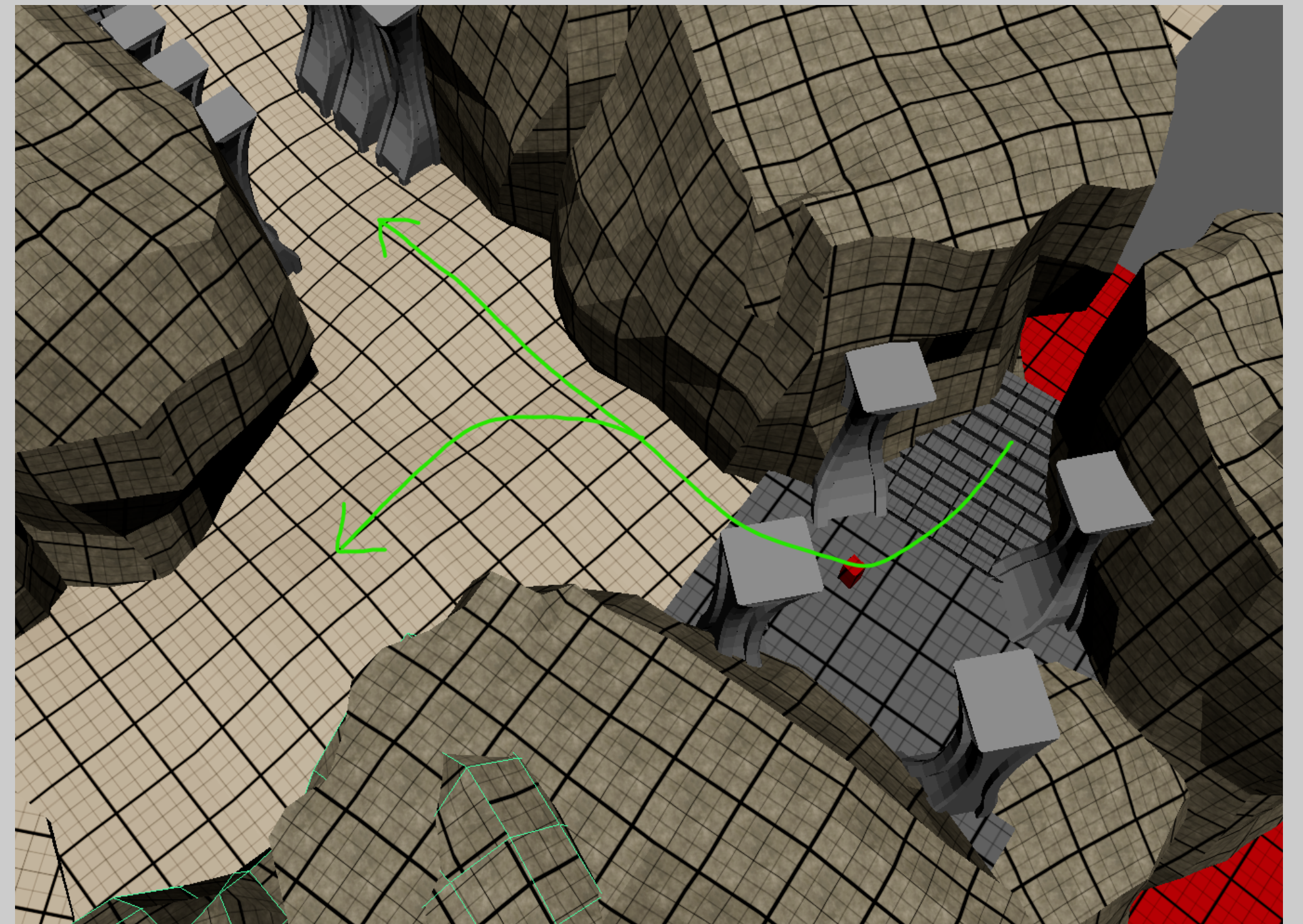


Entry 1

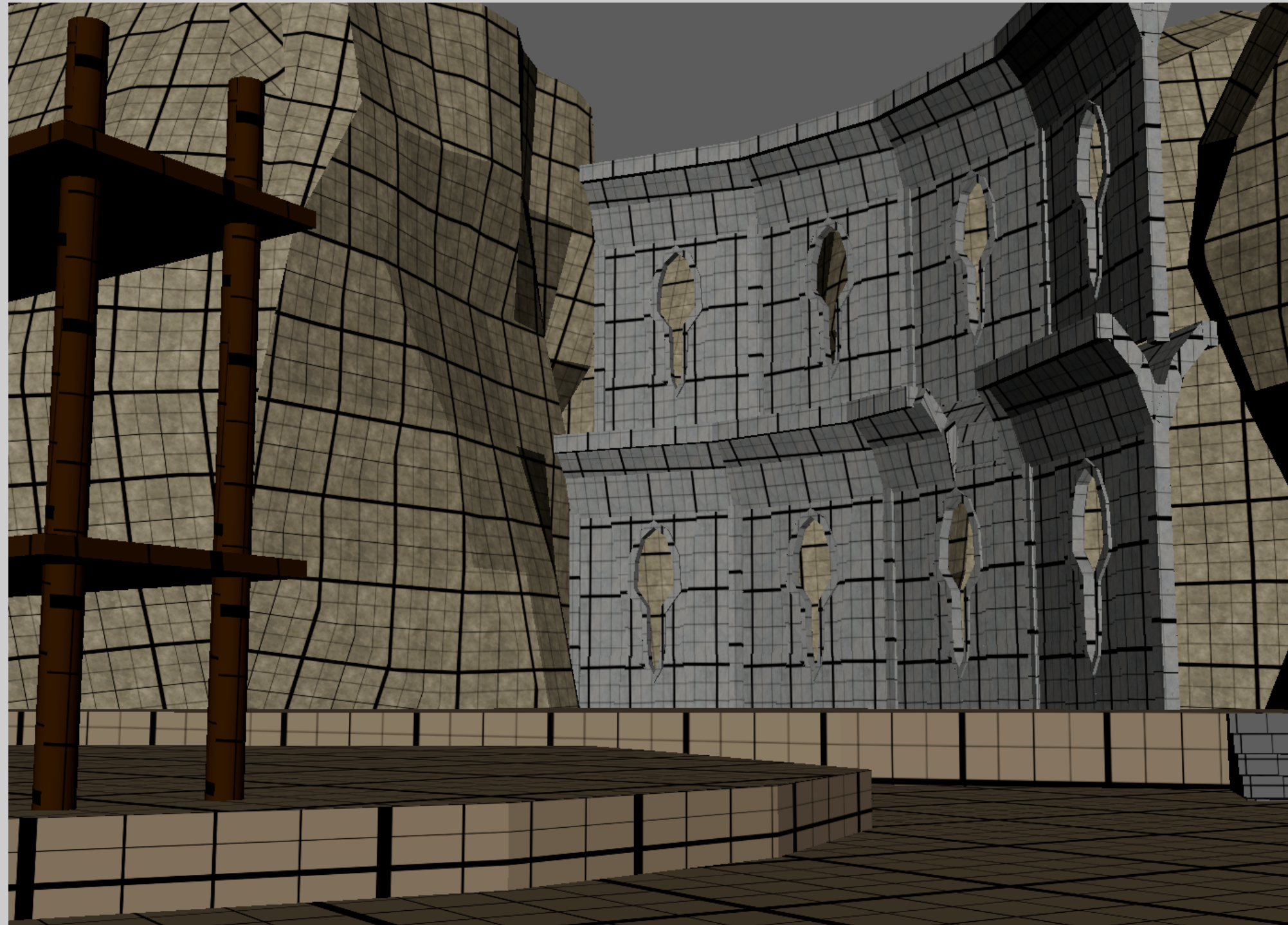
Western entry via tunnel.
Access to Overlook and Ruins 1.

Entry 2

Eastern entry via descending stairs.
Access to Storeroom and Ruins 2.

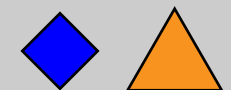


RUINS



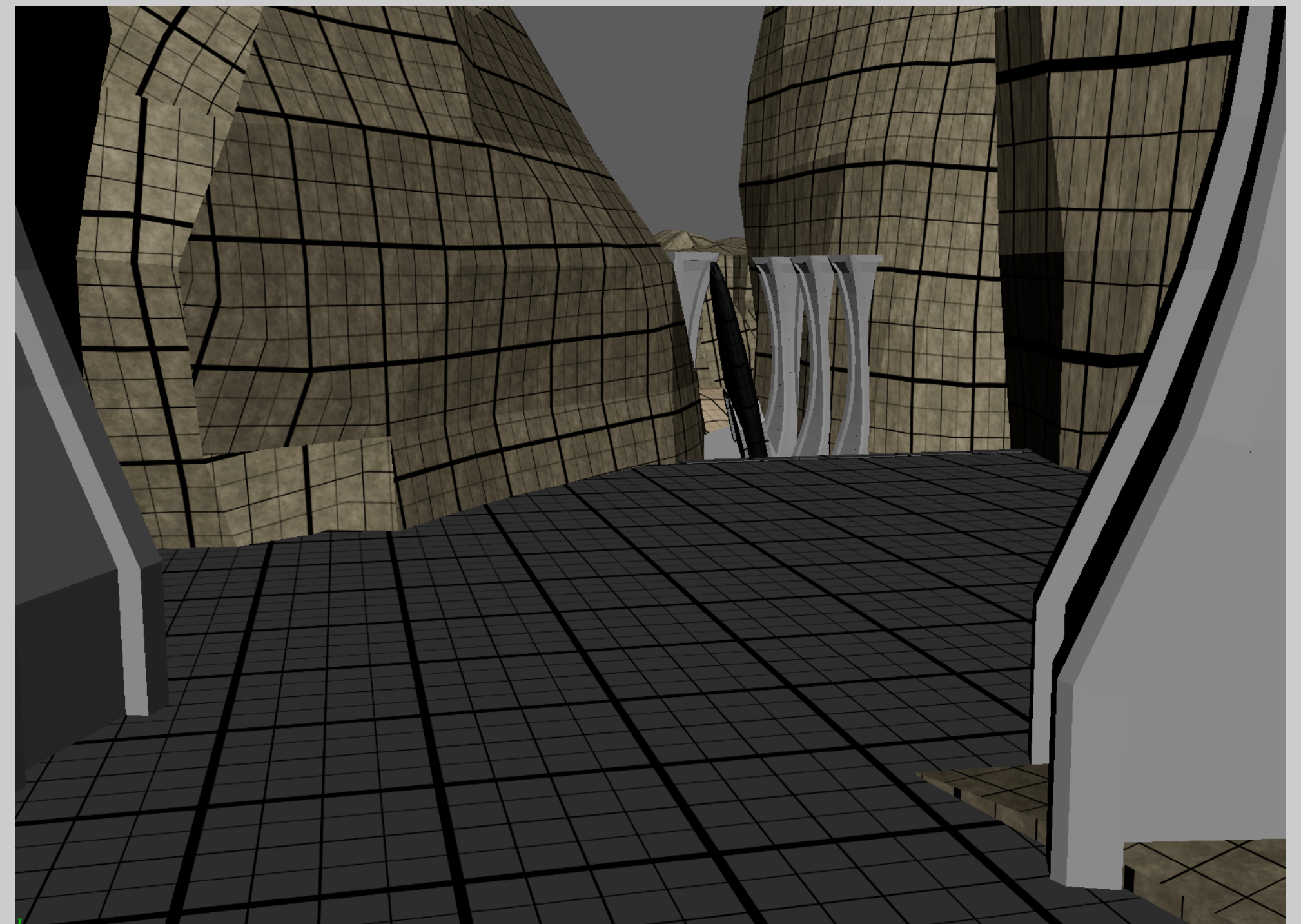
Ruins 1

Dig site for a circular ruin surrounded by scaffolding.



Ruins 2

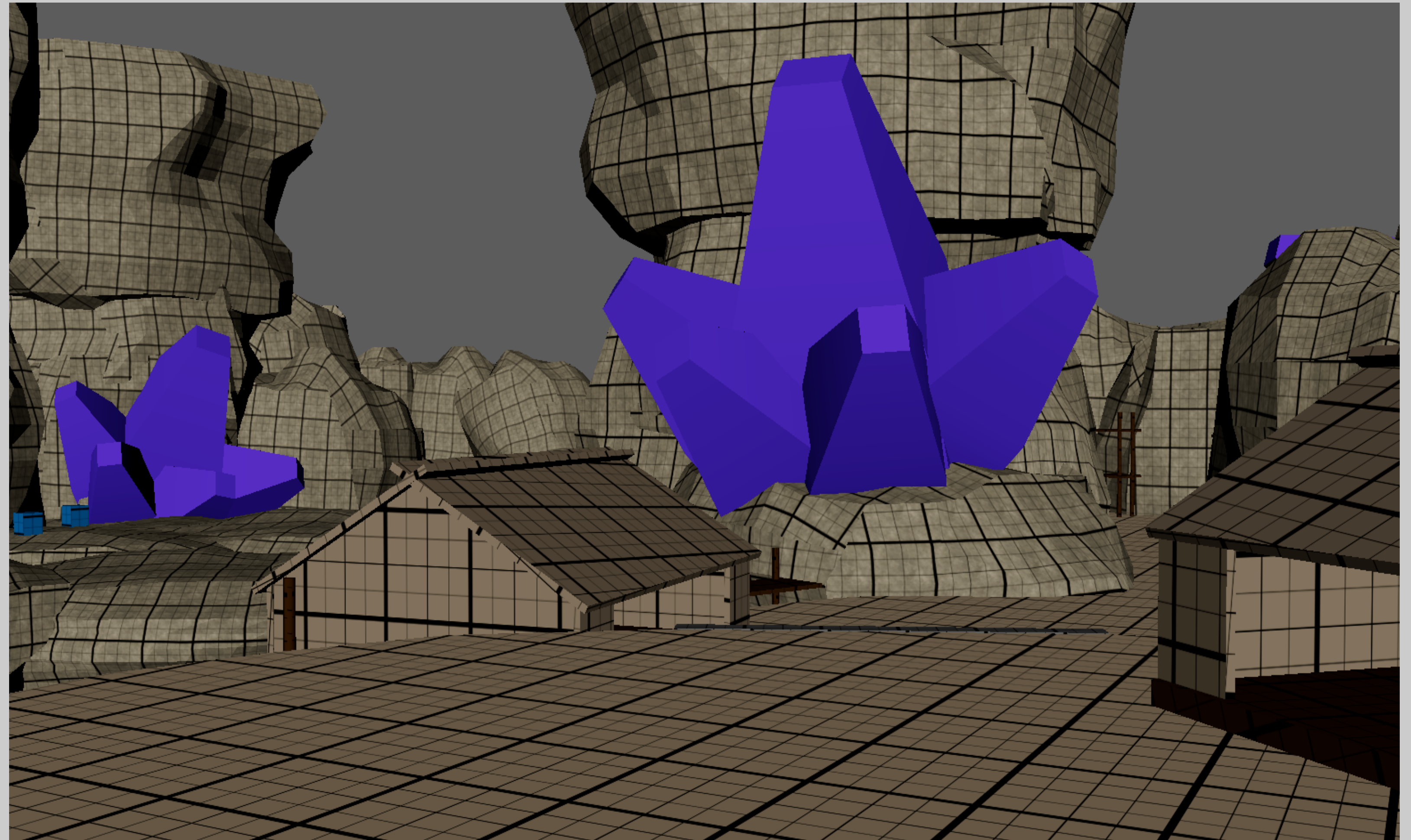
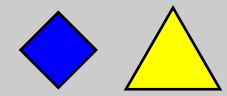
Elevated stone platform laden with ancient pillars, some collapsed.



OVERLOOK

Overlook

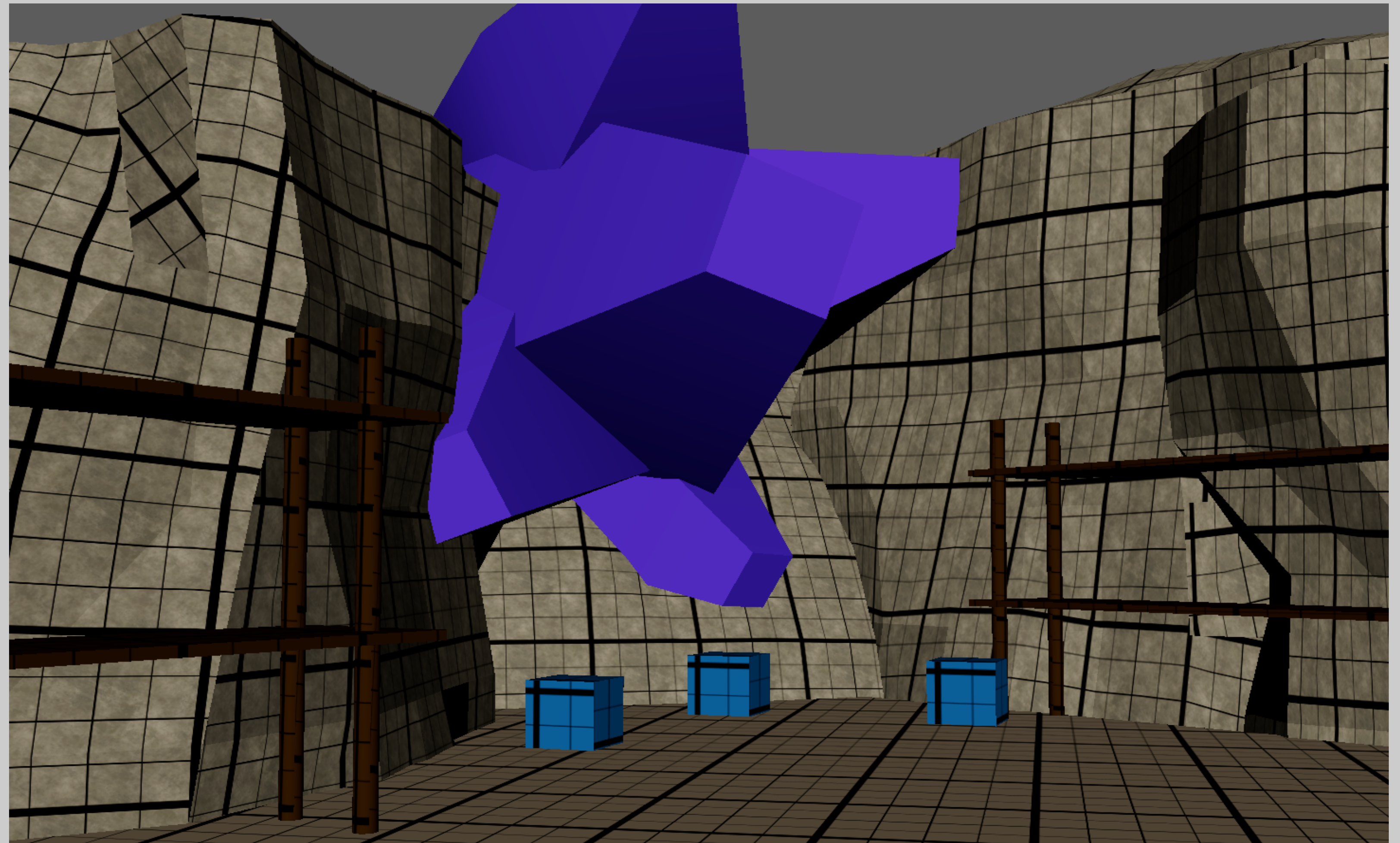
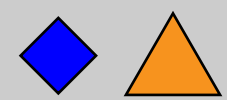
Stone ledge overlooking the magma vents and providing visual of the bridge. Contains several structures for prior shelter or storage.



SHAFT

Shaft

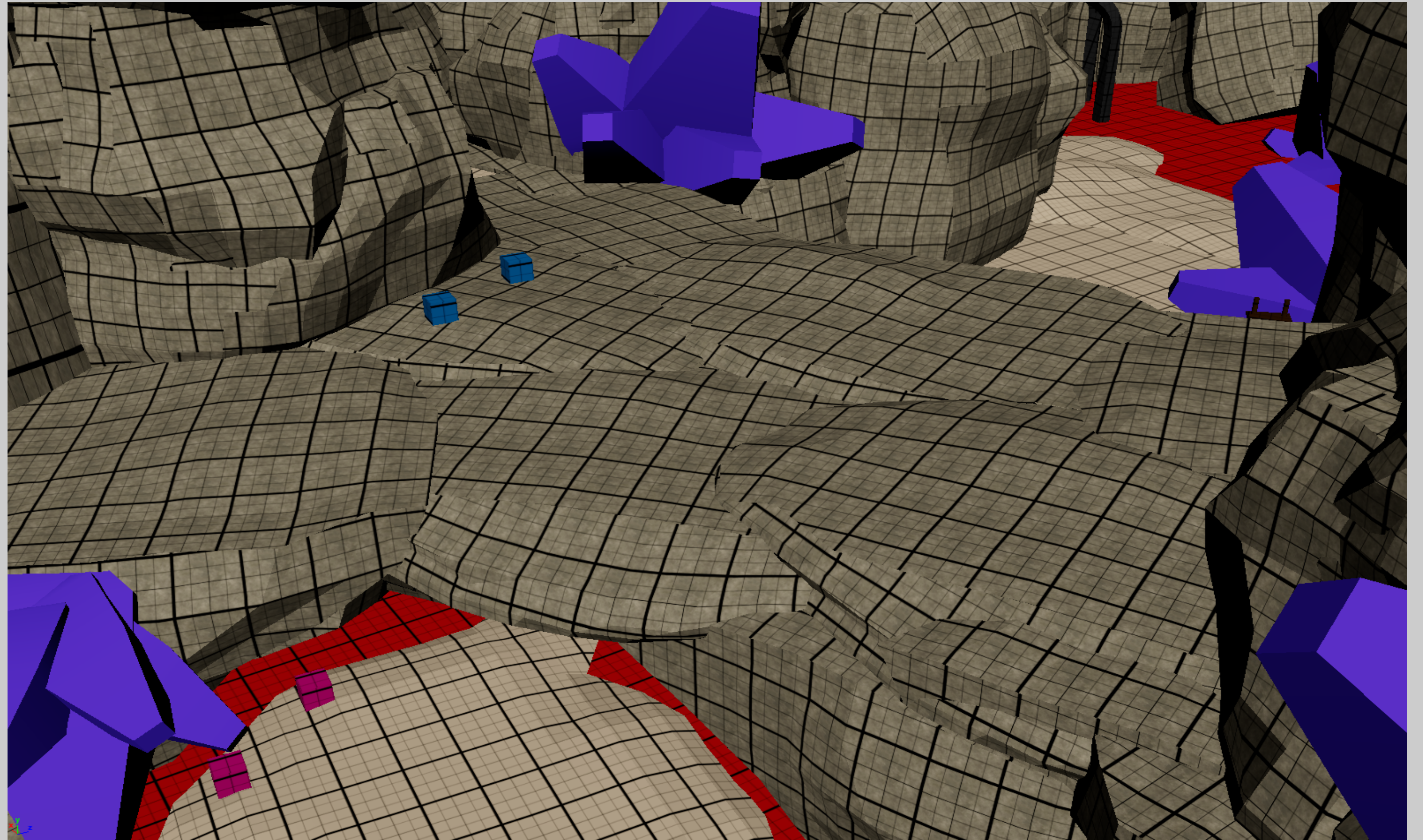
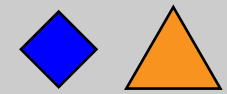
Collapsed and closed mine shaft surrounded by scaffolding, resource nodes, and featuring a giant purple crystal.



BRIDGE

Storeroom

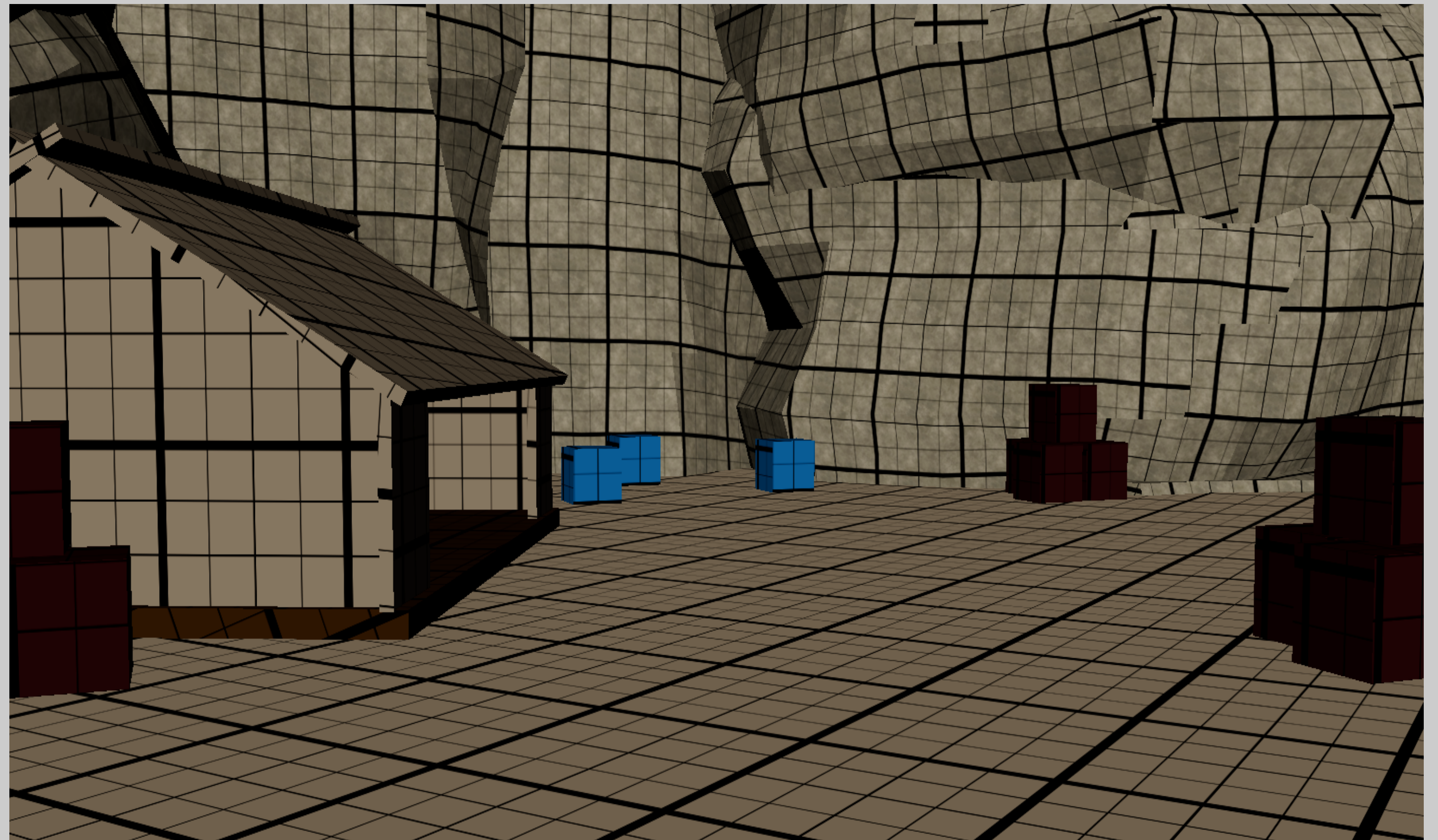
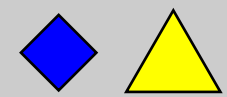
Centrally-located natural rock bridge that crosses over the lava pits below. This area connects easily with most other areas.



STOREROOM

Storeroom

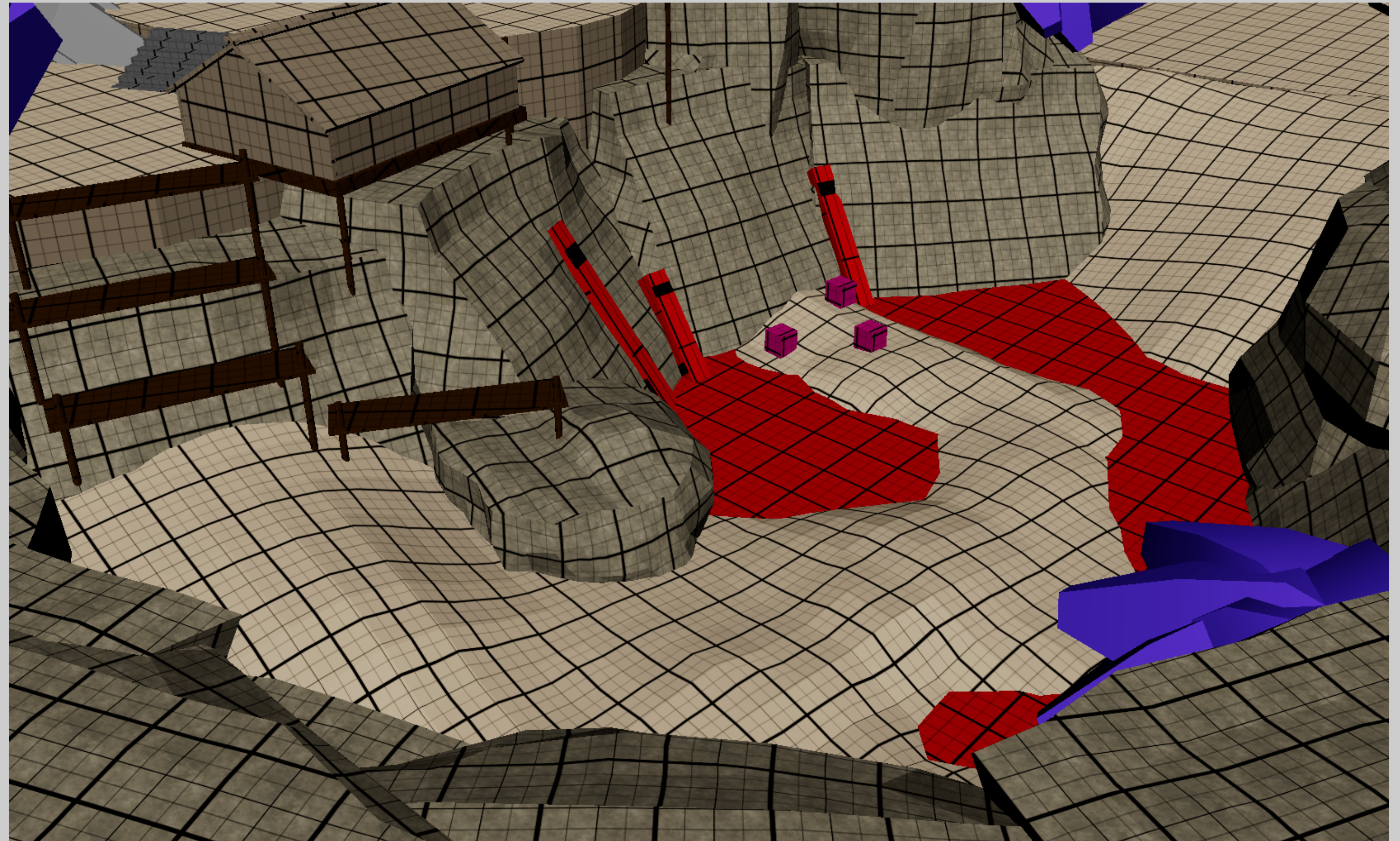
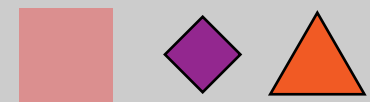
Storage area littered with crates, the contents of which include digging and mining tools, along with explosives.



MAGMA VENTS

Magma Vents

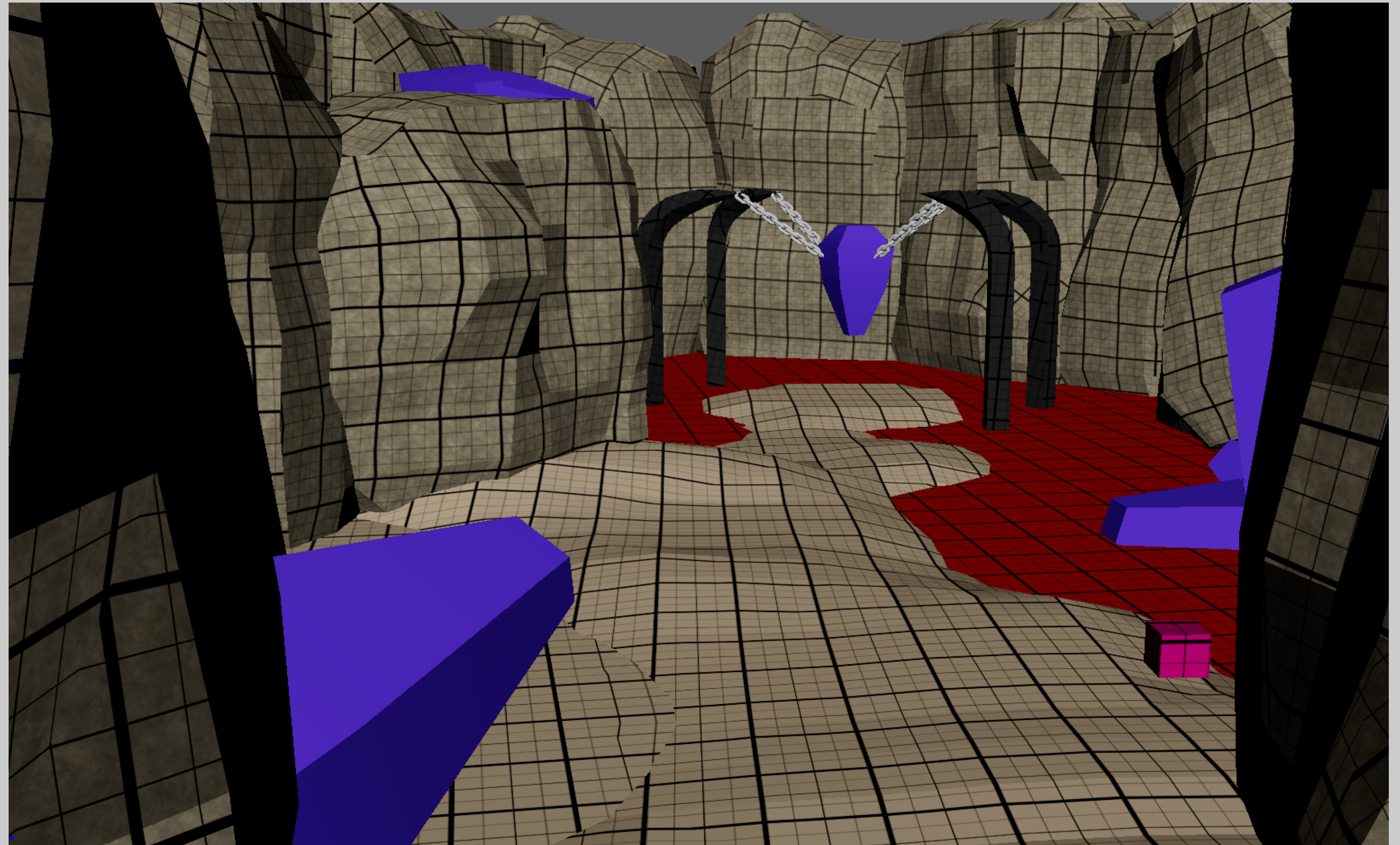
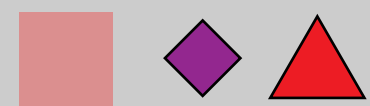
Depression in the mines with magma actively spilling from vents and pooling into a stream. Resource rich, but hazardous.



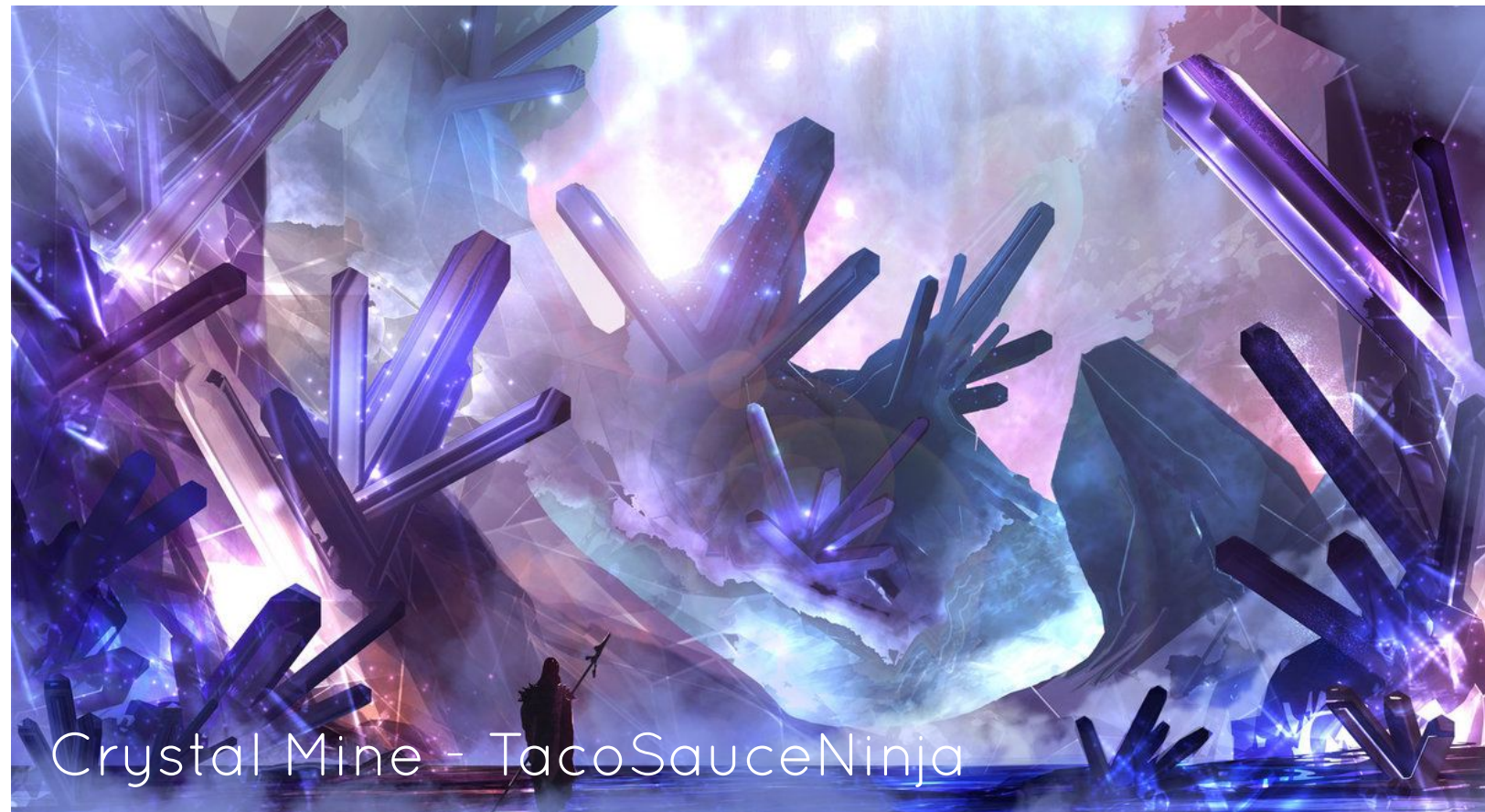
LAVA PIT

Lava Pit

A crystal artifact suspended by a mysterious structure is the focus of this dangerous area; lava flows down here from the vents.



MOODBOARD



Crystal Mine - TacoSauceNinja



FF14 - DividusYliaster



Fantasy Lava Cave - Makarori



Lava Cave - ARK



Dragon Breath Volcano - Tower of Fantasy